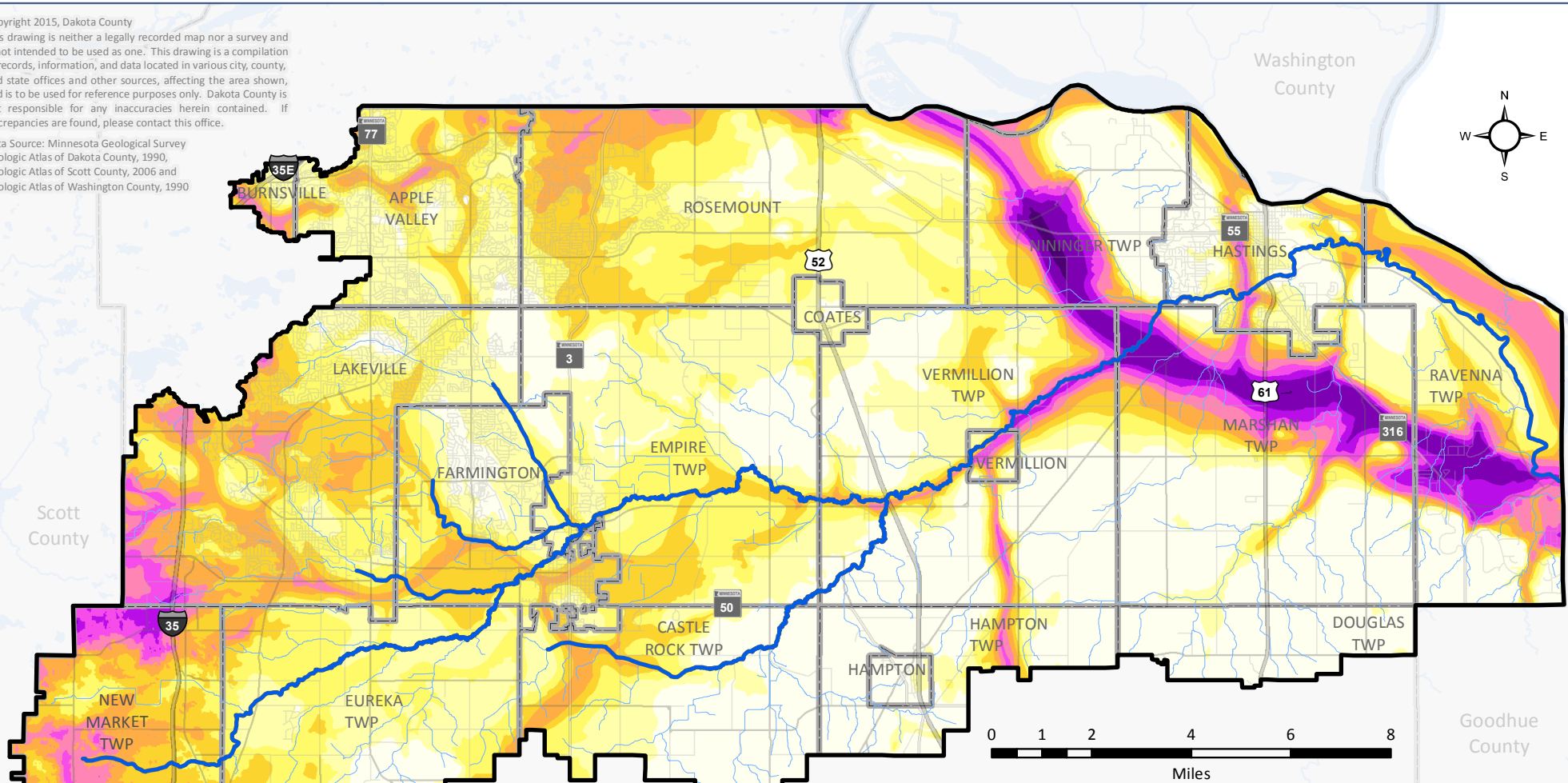


Copyright 2015, Dakota County
 This drawing is neither a legally recorded map nor a survey and is not intended to be used as one. This drawing is a compilation of records, information, and data located in various city, county, and state offices and other sources, affecting the area shown, and is to be used for reference purposes only. Dakota County is not responsible for any inaccuracies herein contained. If discrepancies are found, please contact this office.

Data Source: Minnesota Geological Survey
 Geologic Atlas of Dakota County, 1990,
 Geologic Atlas of Scott County, 2006 and
 Geologic Atlas of Washington County, 1990



Legend

Depth to Bedrock (feet)		251-300
		Less than 51
		51-100
		101-150
		151-200
		201-250
		301-350
		351-400
		401-500
		More than 500

Vermillion River and Major Tributaries
 Minor Tributaries and Waterways

