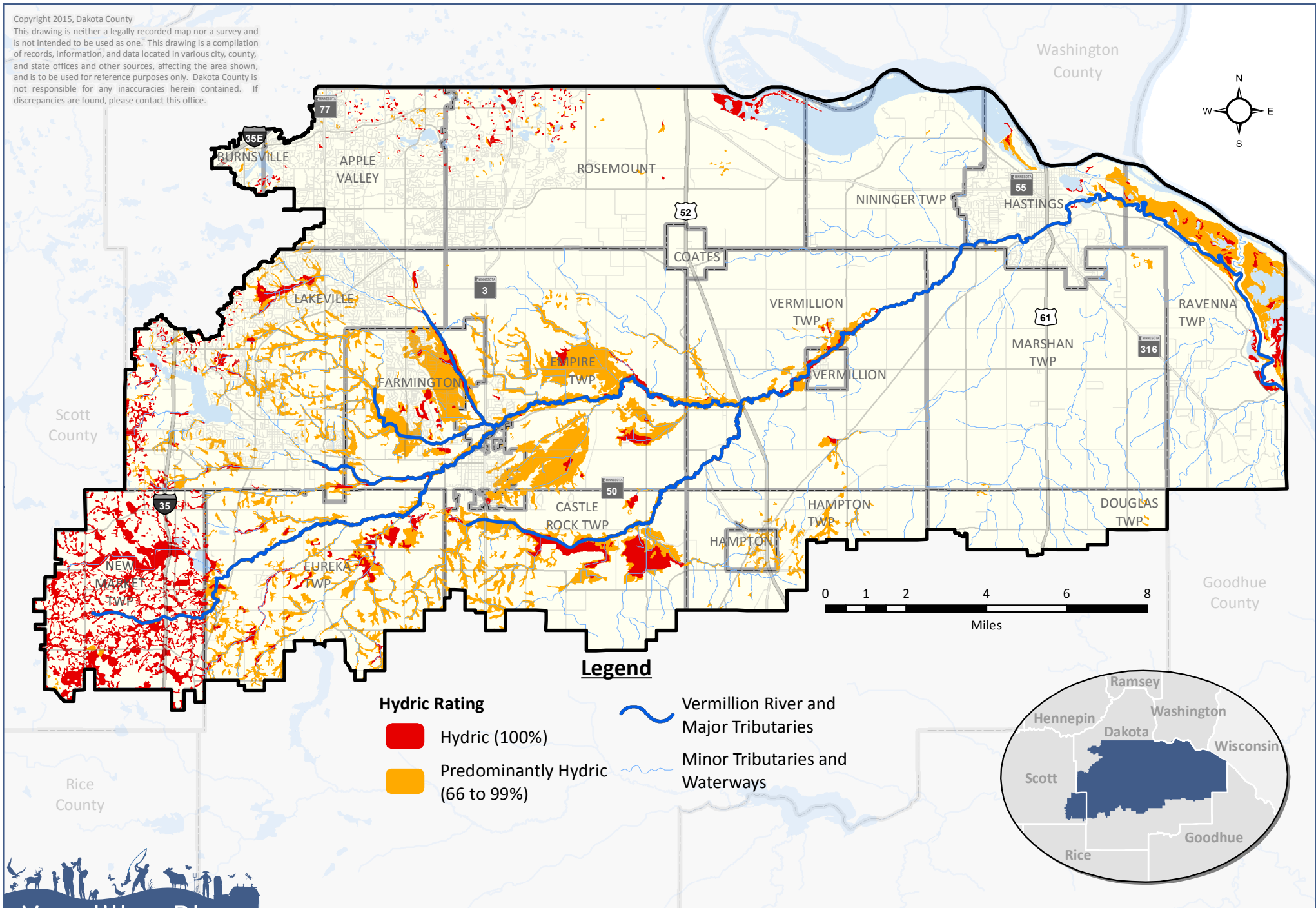


Copyright 2015, Dakota County  
 This drawing is neither a legally recorded map nor a survey and is not intended to be used as one. This drawing is a compilation of records, information, and data located in various city, county, and state offices and other sources, affecting the area shown, and is to be used for reference purposes only. Dakota County is not responsible for any inaccuracies herein contained. If discrepancies are found, please contact this office.



**Legend**

**Hydric Rating**

- Hydric (100%)
- Predominantly Hydric (66 to 99%)

- Vermillion River and Major Tributaries
- Minor Tributaries and Waterways

