

EARTH FRIENDLY LANDSCAPING

Actions for a green lawn and colorful landscaping.

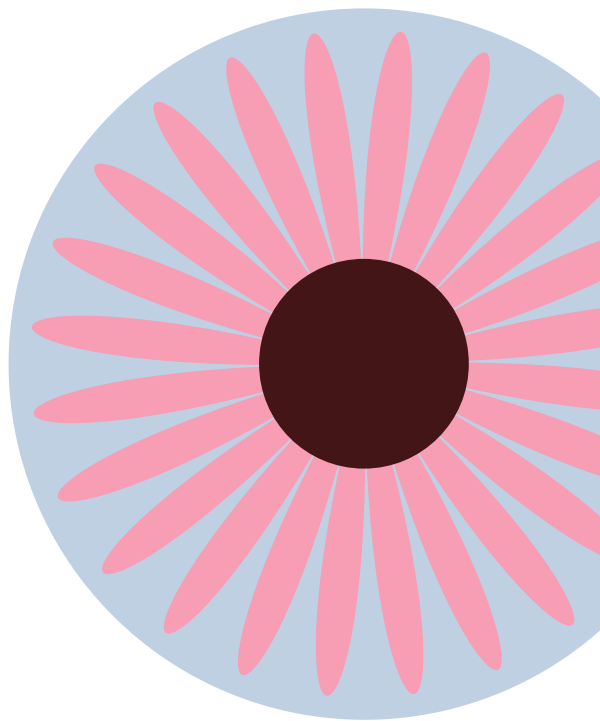


KEEP IT LONG:

If the lawn is left at least three inches tall, it will grow longer roots, be more drought resistant, and have fewer weeds.

PLANT NATIVES:

Plant native flowers and trees. They are lower maintenance, require less watering, and help our pollinators.

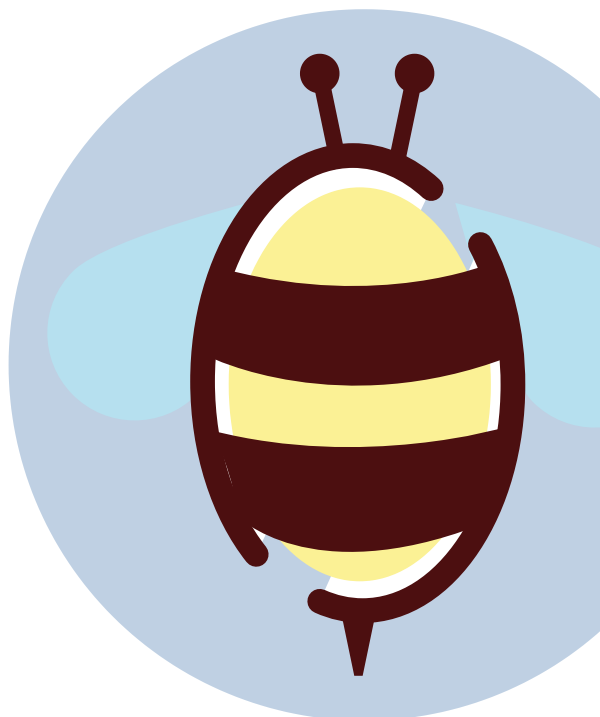


IRRIGATION:

Plan to water in the early morning or evening to beat daytime evaporation. Remember, brown grass is not dead, just dormant, and with some water, will turn green.

REDUCE PESTICIDES:

Many chemicals we use are harmful to pollinators and other creatures. Reduce or eliminate pesticide use if you can.



1 INCH A WEEK:

Grass only needs one inch of water per week, regardless if it's from rain or irrigation. Plan to water in the early morning or evening. Make sure you're watering the lawn, not the sidewalk or driveway.

