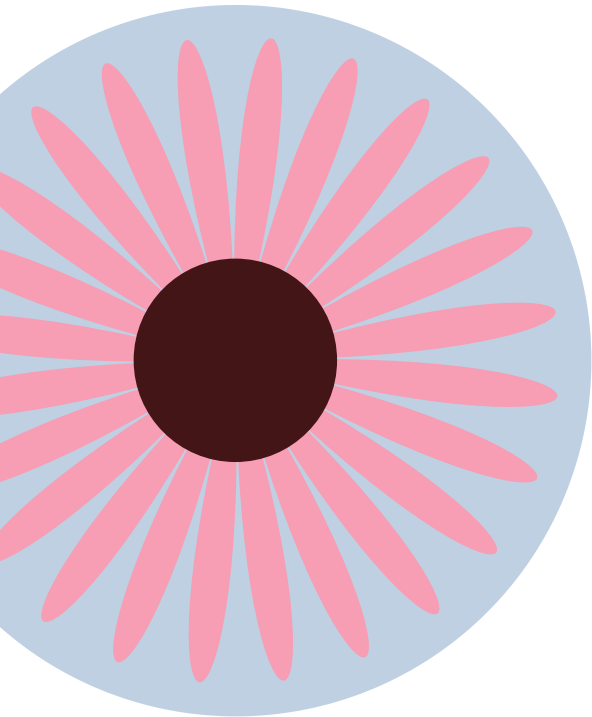


PLANT FOR POLLINATORS

Pollinators are declining. Here's how you can help!

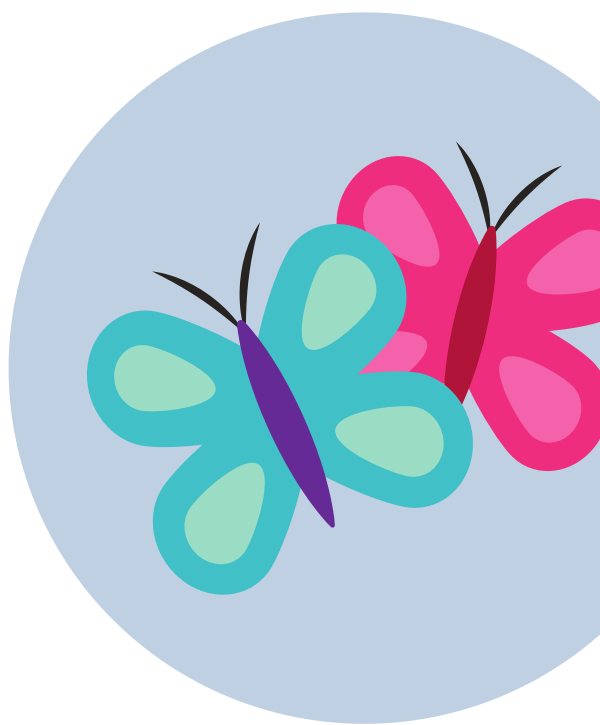


PLANT NATIVE:

Plant a variety of native flowers. Bees have been shown to prefer native plants. Home gardens help enhance bee numbers and diversity.

KEEP BLOOMING:

Keep your garden blooming all season long. Choose plants that provide pollen and nectar spring, summer, and fall.

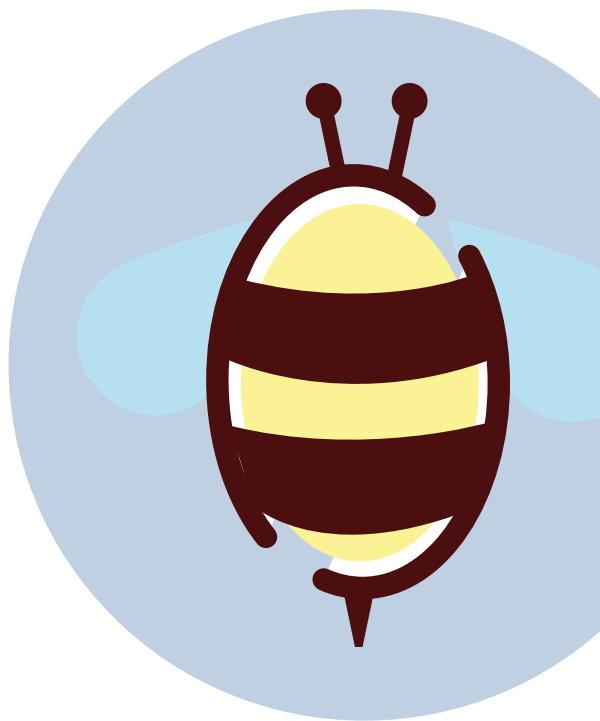


PROVIDE A HOME:

Provide nesting sites by leaving dead branches or logs. Leave undisturbed areas or install bee nesting boxes.

REDUCE PESTICIDES:

Many chemicals we use are harmful to pollinators and other creatures. Reduce or eliminate pesticide use if you can.



SHARE YOUR STORY:

Tell your friends and family about pollinators and inspire them to take action!